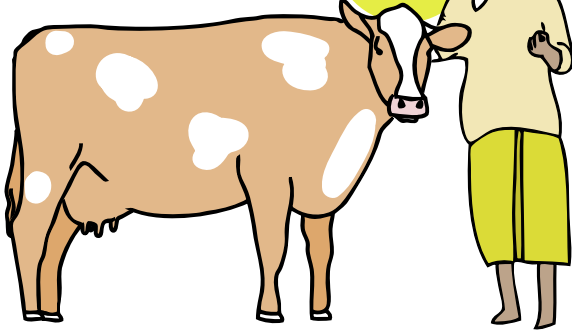


# GIVE A WOMAN AN ASSET

IF A WOMAN RECEIVES A COW...

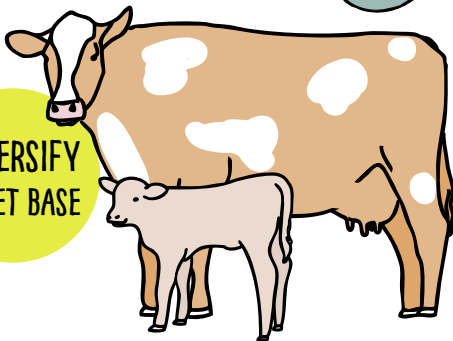
INCOME SOURCE



SHE WILL HAVE MILK TO SELL AT THE LOCAL MARKET.

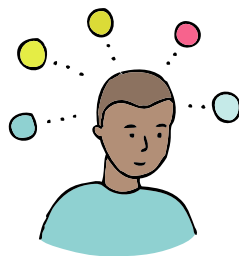


DIVERSIFY ASSET BASE



ONCE SHE HAS ENOUGH MONEY, SHE CAN BREED THE COW.

SHE NOW HAS OPTIONS TO MAKE DECISIONS FOR HERSELF AND HER FAMILY.



IF AN UNEXPECTED EVENT HAPPENS, SHE CAN CHOOSE TO SELL ONE COW TO ABSORB UNFORSEEN EXPENSES.

ONE ASSET CAN HELP A WOMAN

**"THRIVE"**

SHE WILL THEN INVEST IN HER FAMILY AND HER COMMUNITY.

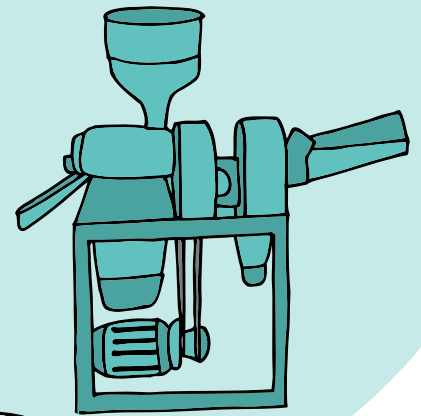
THE OUTCOMES ARE VISIBLE AND MEASURABLE, WITH WIDESPREAD IMPACT.

WITH A LITTLE TRAINING AND AN ASSET OR CAPITAL TO GET STARTED, A WOMAN OR GIRL CAN DO THE REST.

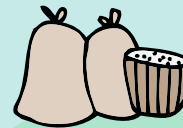
WHEN A GROUP OF WOMEN HAD NO WAY TO EARN AN INCOME, THEY CAME TOGETHER AND OBSERVED THAT RICE GROWERS TRAVELED FAR BY FOOT TO MILL THEIR RICE ...



SO THEY APPLIED FOR FUNDING TO BUY AND OPERATE A LOCAL RICE MILL.



NOW, THEY EARN INCOME AND HELP THE COMMUNITY.



GIRLS CAN EARN AN INCOME TOO. THEY BECOME LESS VULNERABLE AND MORE ABLE TO INVEST IN THEIR FAMILIES.

